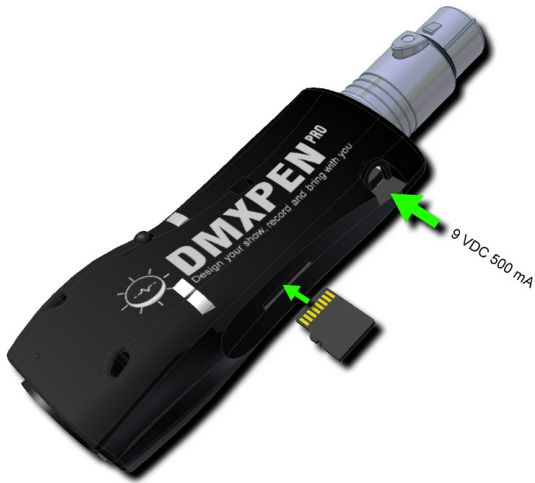


DMXPEN Pro – Playback Quick Manual

▶ PLAY - step 1



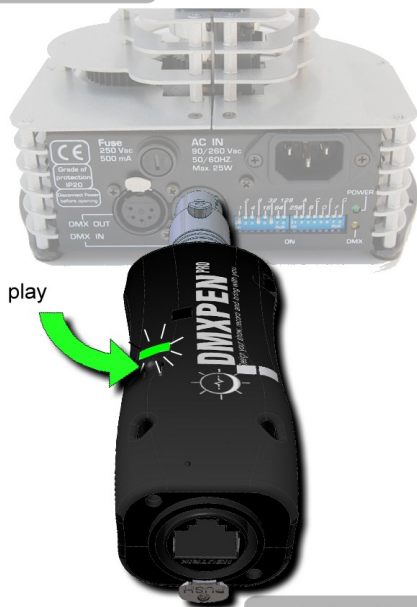
- a. power DMXPEN
- b. be sure that was on standby (multifunction led light sky blue)

▶ PLAY - step 2



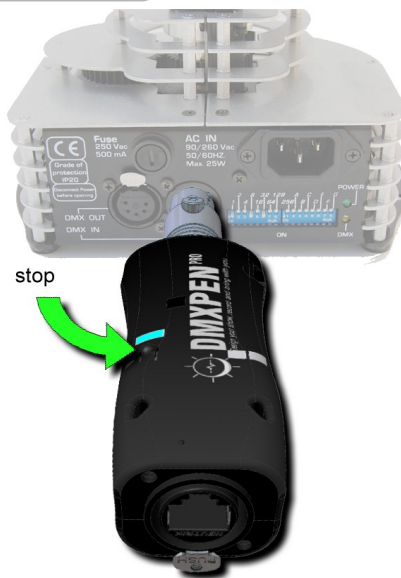
- c. plug DMXPEN on fixture or stage DMX IN

▶ PLAY - step 3



- d. press the on board switch to start playback. The multifunction led will light green. The led will light red in on show, not present on microSD card.

▶ PLAY - step 4



- e. press the on board switch to stop playback. DMXPEN back to standby state and the multifunction led will light sky blue.

nota: DMXPEN memorizza l'ultimo stato selezionato, che verrà ripristinato al Power ON